



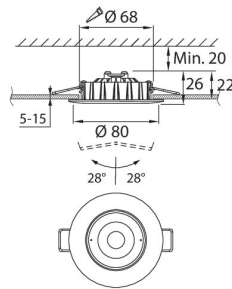
Cosmo Tilt

IP20 6W/830 DIM WH

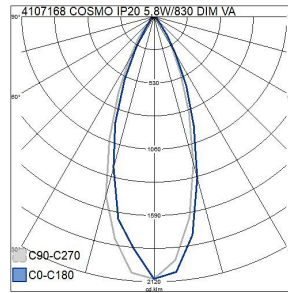
Downlight

Choose the triac-dimmable Cosmo DIM LED downlight when you need a narrow and adjustable beam of light. Cosmo's light beam can be directed +/-28°. The aluminium reflector and glare shield provide efficient, pure white light. With a slim housing height of only 26 mm, Cosmo fits perfectly in low ceilings. Ideal for general or accent lighting in dry indoor areas.

Cosmo Tilt Downlight 6W 3000K 480lm Beam angle Medium beam 20-40°; Dim phase cut-off; Dim phase cut-on; IP20; Protection cl. II; L70B50 25000h; LED not exchangeable; CRI>80; Ending; 2x0.75mm²; Housing al; Colour wh; Cover Plastic, structured



IP20 6W/830 DIM WH			
PRODUCT CODE	CODE	KG	PRODUCT FAMILY
4107168	A1COBA	0.108	Cosmo Tilt



Mounting	
Suitable for surface mounting	No
Suitable for recessed mounting	Yes
Suitable for wall mounting	No
Suitable for suspended mounting	No
Suitable for ceiling mounting	Yes
Suitable for traverse mounting	No
Suitable for pedestal/floor mounting	No
Suitable for light-track mounting	No
Suitable for clamp-mounting	No
Suitable for low voltage cable system	No
Degree of protection (IP)	IP20
Type of wiring	Ending
Number of poles	2
Conductor cross section (mm ²)	0.75
Connection type	Screwed terminal
Luminaire with limited surface temperature, class "D" in acc. with EN 60598-2-24	No
Fit for workplace acc. EN 12464-1	No
Luminaire may be covered with thermally insulating material	No
Structure	
Adjustability	Swivelling
Lamp type	LED not exchangeable
Light source included	Yes
Suitable for number of lamps	1
Lamp holder	Other
Housing material	Aluminium
Surface protection	Plastic-coated
Housing colour	White
Cover material	Plastic, structured
Surface brushed	No
Control gear included	Yes
Energy efficiency class of light source according to EU regulation 2019/2015	G
Emergency power supply integrated	No

Dimming and control	
With movement sensor	No
With light sensor	No
Dimmable	No
Dimming 0-10 V	No
Dimming 1-10 V	No
Dimming DALI-2	No
Dimming DALI	No
Dimming DMX	No
Dimming DSI	No
Dimming potentiometer (integrated)	No
Dimming LineSwitch	No
Dimming manufacturer's proprietary system	No
Dimming mains voltage modulation	No
Dimming trailing edge	Yes
Dimming leading edge	Yes
Dimming programmable	No
Dimming RF	No
Dimming Sine Wave Reduction	No
Dimming Touch and Dim	No
Dimming Zigbee	No
Dimming with push-button	No
No dimming function	No
IFTTT support available	No
Compatible with Apple HomeKit	No
Compatible with Google Assistant	No
Compatible with Amazon Alexa	No

Photometric data	
Light distributor	Reflector
Light sharing	Symmetric
Beam angle	Medium beam 20-40°
Light outlet	Direct
Colour of light (alphanumeric)	White
Colour temperature (min) (K)	3000
Colour temperature (max) (K)	3000
Colour temperature switchable	No
Colour rendering index (CRI/Ra)	80-89
Luminous flux (min) (lm)	480
Luminous flux (max) (lm)	480
Effective luminous flux (lm)	480
Lumen setting adjustable	No
Luminous intensity (cd)	1000
Beam angle adjustable	No
Colour consistency (McAdam ellipse)	SDCM6

Lifetime and capacity	
Rated life time L70/B50 at 25 °C (h)	25000
Rated ambient temperature acc. IEC62722-2-1 (min) (°C)	0
Rated ambient temperature acc. IEC62722-2-1 (max) (°C)	25

Measurements	
Length (mm)	80
Width (mm)	80
Height/depth (mm)	26
Outer diameter (mm)	80
Built-in length (mm)	68
Built-in width (mm)	68
Built-in height/depth (mm)	42
Recess diameter (min) (mm)	68
Recess diameter (max) (mm)	68

Electrotechnical data	
Voltage type	AC
Nominal voltage (min) (V)	220
Nominal voltage (max) (V)	240
Type of control gear	LED operating device voltage-controlled
Protection class according to IEC 61140	II
Suitable for lamp power (min) (W)	6
Suitable for lamp power (max) (W)	6
Maximum system power (W)	6
Luminaire efficacy (lm/W)	80