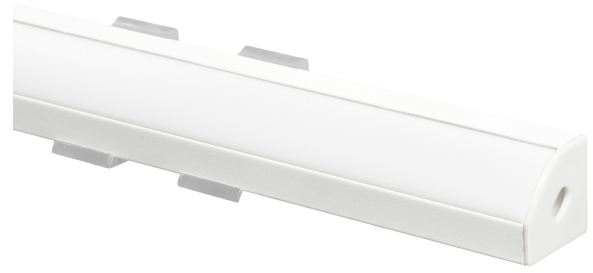




CORNER

CORNER ALUMINIUM PROFILE WH 2M

Surface-mounted aluminium profiles make installing LED strips easier. The Corner aluminium profile is designed to fit 90° angles or corners, for example under kitchen cabinets. The corner profile directs the LED light at a 45° angle into the room. For instance, when used as task lighting above a kitchen counter, the profile is mounted at the back edge under the cabinets so that the brightest light is directed evenly toward the front of the work surface. The aluminium profiles give lighting a neat, finished appearance while protecting the LED strip from dust and dirt. The opal white polycarbonate cover reduces glare from the LEDs. The profiles are suitable for LED strips up to 10 mm wide. Available in two lengths. The package includes end caps and mounting clips.



CORNER ALUMINIUM PROFILE WH 2M

PRODUCT CODE	CODE	KG	PRODUCT FAMILY
4116413	A1COAB	0.32	CORNER

CORNER ALUMINIUM PROFILE WH 2M

EC002706

Mounting

Mounting method	Surface mounting
Degree of protection (IP)	IP20

Structure

With end piece	Yes
With protective cover	Yes
Self-adhesive	No

Dimming and control

Photometric data

Lifetime and capacity

Measurements

Width (mm)	16.3
Height/depth (mm)	16.3
Length (mm)	2000

Electrotechnical data