



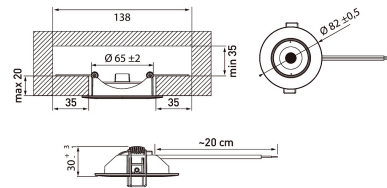
Skye Tilt

IP20 5W/840 PCC WH 3-SET

Downlight

The low-profile Skye Tilt is suitable for both general and accent lighting. IP20 models are ideal for use in dry indoor areas. The light beam can be adjusted by +/-28° when needed. The package includes three luminaires. Available colour temperatures: warm white 3000 K or cool white 4000 K.

Skye Tilt Downlight set 5W 4000K 450lm Beam angle Medium beam 20-40°; No dim; IP20; IK03; Protection cl. II; L70B50 25000h; LED not exchangeable; CRI>80; SDCM6; Ending; 2x0.75mm²; Housing Plastic; Colour wh; Cover Plastic, transparent



IP20 5W/840 PCC WH 3-SET

PRODUCT CODE	CODE	KG	PRODUCT FAMILY
4146529	A1SKYA	0.05	Skye Tilt

Mounting	
Suitable for surface mounting	No
Suitable for recessed mounting	Yes
Suitable for wall mounting	No
Suitable for suspended mounting	No
Suitable for ceiling mounting	Yes
Suitable for traverse mounting	No
Suitable for pedestal/floor mounting	No
Suitable for light-track mounting	No
Suitable for clamp-mounting	No
Suitable for low voltage cable system	No
Degree of protection (IP)	IP20
Impact strength	IK03
Type of wiring	Ending
Number of poles	2
Conductor cross section (mm ²)	0.75
Connectable conductor cross section (min) (mm ²)	0.75
Connectable conductor cross section (max) (mm ²)	2.5
Connection type	Screwless terminal
Luminaire with limited surface temperature, class "D" in acc. with EN 60598-2-24	No
Fit for workplace acc. EN 12464-1	No
Luminaire may be covered with thermally insulating material	No
Structure	
Adjustability	Swivelling
Lamp type	LED not exchangeable
Light source included	Yes
Suitable for number of lamps	1
Lamp holder	Other
Housing material	Plastic
Surface protection	Plastic-coated
Housing colour	White
Cover material	Plastic, transparent
Surface brushed	No
Control gear included	Yes
Reflector	High-gloss
Energy efficiency class of light source according to EU regulation 2019/2015	F
Emergency power supply integrated	No
Filament test according to IEC 60695-2-11	650 °C - 30 s

Dimming and control	
With movement sensor	No
With light sensor	No
Dimming 0-10 V	No
Dimming 1-10 V	No
Dimming DALI-2	No
Dimming DALI	No
Dimming DMX	No
Dimming DSI	No
Dimming potentiometer (integrated)	No
Dimming LineSwitch	No
Dimming manufacturer's proprietary system	No
Dimming mains voltage modulation	No
Dimming trailing edge	No
Dimming leading edge	No
Dimming programmable	No
Dimming RF	No
Dimming Sine Wave Reduction	No
Dimming Touch and Dim	No
Dimming Zigbee	No
Dimming with push-button	No
No dimming function	Yes

Photometric data	
Light distributor	Refractor lens
Light sharing	Symmetric
Beam angle	Medium beam 20-40°
Light outlet	Direct
Colour of light (alphanumeric)	White
Colour temperature (min) (K)	4000
Colour temperature (max) (K)	4000
Colour temperature switchable	No
Colour rendering index (CRI/Ra)	80-89
Luminous flux (min) (lm)	450
Luminous flux (max) (lm)	450
Effective luminous flux (lm)	450
Colour consistency (McAdam ellipse)	SDCM6

Lifetime and capacity	
Rated life time L70/B50 at 25 °C (h)	25000
Rated ambient temperature acc. IEC62722-2-1 (min) (°C)	0
Rated ambient temperature acc. IEC62722-2-1 (max) (°C)	25

Measurements	
Length (mm)	82
Width (mm)	82
Height/depth (mm)	30
Outer diameter (mm)	82
Built-in length (mm)	68
Built-in width (mm)	68
Built-in height/depth (mm)	65
Recess diameter (min) (mm)	63
Recess diameter (max) (mm)	67

Electrotechnical data	
Voltage type	AC
Nominal voltage (min) (V)	220
Nominal voltage (max) (V)	240
Type of control gear	Not required
Total harmonic distortion	120
Protection class according to IEC 61140	II
Suitable for lamp power (min) (W)	5
Suitable for lamp power (max) (W)	5
Maximum system power (W)	5
Power factor	0.5
Luminaire efficacy (lm/W)	90