



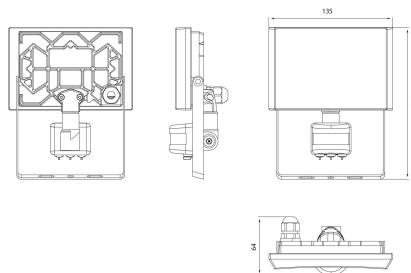
Airflood

PIR IP44 20W/840 1600lm BK

Floodlight

Modern and compact, the Airflood led floodlight is designed for safe and practical lighting of yards, storehouses, traffic routes and car parks. With its edgeless design, the floodlight looks perfect on many different buildings, and the front panel sheds a pleasantly uniform light. Each floodlight has an adjustable lighting angle. You can choose a black or a white model. The floodlights have a plug coupling and a rubber cable. Models with sensor also available.

Airflood Floodlight 20W 4000K 1600lm Beam angle Extreme wide beam >80°; No dim; IP44; IK08; Protection cl. I; L70B50 25000h; LED not exchangeable; CRI>80; Ending; 3x1mm²; Housing al; Colour bk; Cover Plastic, opal; Movement sensor



PIR IP44 20W/840 1600lm BK

PRODUCT CODE	CODE	KG	PRODUCT FAMILY
4547215	A5AIRN	0.41	Airflood

Mounting	
Suitable for surface mounting	Yes
Suitable for recessed mounting	No
Suitable for wall mounting	Yes
Suitable for suspended mounting	No
Suitable for ceiling mounting	No
Suitable for traverse mounting	No
Suitable for pedestal/floor mounting	No
Suitable for light-track mounting	No
Suitable for clamp-mounting	No
Suitable for low voltage cable system	No
Degree of protection (IP)	IP44
Impact strength	IK08
Type of wiring	Ending
Number of poles	3
Conductor cross section (mm ²)	1
Connection type	Other
Fit for workplace acc. EN 12464-1	No

Structure	
Adjustability	Swivelling
Lamp type	LED not exchang- eable
With lamp	Yes
Suitable for number of lamps	1
Lamp holder	Other
Housing material	Aluminium
Housing colour	Black
Cover material	Plastic, opal
Surface brushed	No
Control gear included	No
Reflector	White
Energy efficiency class of light source according to EU regulation 2019/2015	E
Emergency power supply integrated	No
Filament test according to IEC 60695-2-11	650 °C - 30 s

Dimming and control	
With movement sensor	Yes
With light sensor	Yes
Dimming 0-10 V	No
Dimming 1-10 V	No
Dimming DALI-2	No
Dimming DALI	No
Dimming DMX	No
Dimming DSI	No
Dimming potentiometer (integrated)	No
Dimming LineSwitch	No
Dimming manufacturer's proprietary system	No
Dimming mains voltage modulation	No
Dimming phase cut-off	No
Dimming phase cut-on	No
Dimming programmable	No
Dimming RF	No
Dimming Sine Wave Reduction	No
Dimming Touch and Dim	No
Dimming Zigbee	No
Dimming with push-button	No
No dimming function	Yes
IFTTT support available	No
Compatible with Apple HomeKit	No
Compatible with Google Assistant	No
Compatible with Amazon Alexa	No

Photometric data	
Light distributor	Diffuser lens/op- tic/panel
Beam angle	Extreme wide beam >80°
Colour of light (alphanumeric)	White
Colour temperature (min) [K]	4000
Colour temperature (max) [K]	4000
Colour rendering index CRI	80-89
Luminous flux (min) [lm]	1600
Luminous flux (max) [lm]	1600
Effective luminous flux [lm]	1600
Colour temperature switchable	No
Lumen setting adjustable	No
Beam angle adjustable	No
Photobiological safety according to EN 62471	RG1
Colour consistency (McAdam ellipse)	SDCM6
Unified Glare Rating (UGR)	24

Lifetime and capacity	
Rated life time L70/B50 at 25 °C [h]	25000
Rated ambient temperature acc. IEC62722-2-1 [min] [°C]	-20
Rated ambient temperature acc. IEC62722-2-1 [max] [°C]	40

Measurements	
Width (mm)	135
Height/depth (mm)	165
Length (mm)	70

Electrotechnical data	
Voltage type	AC
Nominal voltage (min) [V]	220
Nominal voltage (max) [V]	240
Total harmonic distortion	20
Protection class	I
Suitable for lamp power (min) [W]	20
Suitable for lamp power (max) [W]	20
Maximum system power [W]	20
Power factor	0.9
Luminaire efficacy [lm/W]	80