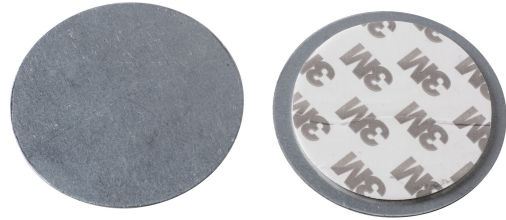


FOR SMOKE ALARMS

The fire alarm is mounted on a ceiling with a strong magnet. Easy to install, no screws required. 3M adhesives on the plates. Ready to install; just remove the protective film. Fix one of the plates to the ceiling and the other to the fire alarm. The alarm is easy to remove in order to replace the battery, for example.



FOR SMOKE ALARMS

| PRODUCT CODE | CODE | KG | PRODUCT FAMILY |
|--------------|--------|-------|----------------|
| 9620073 | S1PVAF | 0.032 | |



FOR SMOKE ALARMS

Mounting

Structure

Dimming and control

Photometric data

Lifetime and capacity

Measurements

Electrotechnical data